

Australian Postcard Society Inc.

Meetings: 7.45p.m. — 4th Thursday of the month
except December (11 meetings only per year)

Where SAPHIL House, 22 Gray Court, Adelaide

Who Anybody interested in postcards

Costs Gold coin donation to cover supper costs.

Auction held each meeting—Forms available from Secretary

Syllabus for 2018

Date	Invited Displays-
25th January	Viewing of The Travelling Postcard Man
22nd February	The Caves of Han by Michel Roland
22nd March	Trading Night
26th April	Betty Cornish Trophy 6 Page Competition -Theme - Children
5-6 May	POSTCARD EXHIBITION Drill Hall, Adelaide
24th May	Port Adelaide & H R James Postcards by Ron Ritter
21st June	Sands & MacDougall by Neville Solly
26th July	A.G.M. Empire Trophy 8 Page Competition - Theme - Australian & NZ Postcards
23rd August	One Framers by Alma Downes
27th September	Surprise Display by John Bodnar
25th October	London by Linda Welden
22nd November	Christmas Supper - Bring a plate of food to share Christmas Card Display by Phil Melling

Australian Postcard Society Inc.



BULLETIN

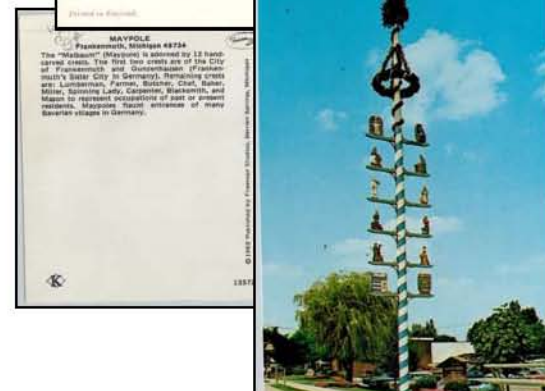
May 2018 Quarterly Issue No. 37

WEBSITE ADDRESS: australian-postcard-society.com



MayPole

A maypole is a tall wooden pole erected as a part of various folk festivals, around which a maypole dance often takes place.



This Bulletin Contents

Page 2	Club Committee
Page 3	Editor Notes
Page 4	Railway Postcard Mystery Solved
Page 10	2001 BankSA Heritage Icon Postcards
Page 14	From The Archives
Page 16	Ways to Display Postcards
Page 18	Member Buy & Sell
Page 19	Business Adverts
Page 20	Club Program

ELECTED COMMITTEE:

President	David Figg
Vice-President	John Bodnar
Treasurer	David Figg
Secretary	Linda Welden
Librarian	Robert Halliday
Publicity	Vacant
Auction Superintendent	George Turner
Magazine Editor	Claire Thomas
SAPC Delegates	Claire Thomas
	Vacant
Raffle Organiser	Claire Thomas
PATRON	Phil Sunman
Website Managers	Johanna Stafford
Auditor	Andy Kovaleff

Any questions or matters of interest contact

The Secretary,
Linda Welden,
PO Box 281,
Edwardstown,
South Australia, 5039.

email: lindawelden35@gmail.com

Phone: 0421 367 665

Membership Fees—1st July-30th June

SINGLE	\$20.00
JUNIOR up to 16	\$ 6.00
FAMILY	\$30.00
OVERSEAS	AUS\$35.00
Paypal available	

BULLETIN BACK ISSUES

If you have missed out on back issues of the Bulletin they are available at \$5 plus postage. Or I can email you a pdf

BECOME INVOLVED

Bring any interesting items for "Show and Tell".

Members can bring their items for sale to meetings.

Bring auction lots to meetings.

ARTICLES FOR THE BULLETIN

Bring in a postcard... or as many as you want.

If you are from interstate/overseas scan it and email. Or send the postcard registered mail it will be scanned and returned asap registered post.

With **each** postcard a write-up will be needed - about half page or more. Either hand written or typed.

Add your name if you wish or not if you are worried about the safety of your collection.

Keep them coming they will be added as space permits.

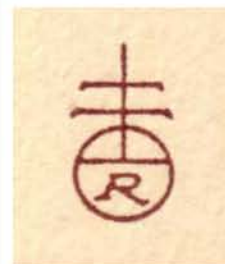


Beechey's Postcard History - a web site

A reference to the history of Tasmanian Postcards

Frequently updated with new postcard images and new publishers

<http://beecheyspostcardhistory.org.au>



BUYING - SELLING

Old Books, Postcards, Trade Cards,
Cigarette Cards, Ephemera,
Autographs, Sheet Music, Anything Printed.

ABRA CARD ABRA ROYCROFT

680 High Street, East Kew, 3102, Victoria

Phone/Fax (03) 9859 4215

MEMBERS ADVERTISEMENTS:

WANTED TO BUY:

For Sale Radio Active Newspaper Published by the ABC August 1970
Series 2, Volume 6 #8 Fair Condition—offers,
Souvenir Special 200 years of Australia's First Newspaper Fair
Condition—offers Contact John 0416 944 236

Australian Comic Postcards. Collector and researcher looking for
singles, groups, duplicates, hoards, large/small collections.
Anything considered.
Contact Gary Davies, PO Box 107, Magnetic Island, Queensland, 4819.
email: ccbnq@optusnet.com.au

New Zealand Postcards Contact Linda Welden 0421 367 665
lindaw3456@gmail.com

Postcards of Kalamunda (West Australia), Goa (India),
Lord Howe Island & Magnetic Bay (Queensland) and Norfolk Islands
Email: pk@bankofideas.com.au or Call Peter Kenyon on: 62931848

Murray Bridge Postcards and items wanted Please contact
Robert Halliday 0419 800 497

Members if you want to advertise your buys and sells etc let me know.

Business Advertising

Per Bulletin prices

\$30 per full page

\$15 half page

\$7.50 1/4 page

Our Bulletins go world wide

From The Editor—

Hi Folks,

A huge thank you for anyone who contributes items to The Bulletin.
For every page published, you get \$1 from your next years
subscription fees.

For Members who do use Facebook we do have a club page.

Members of the public are invited to donate any unwanted
postcards to our club.

Claire Thomas

"If you don't ask, you don't find out"

If you ever need/want to contact me
Mobile phone 0426 253 276—I am always happy to ring you back

Letters to the Editor

GOOD NEWS

Postcards Online new website **www.postcardsonline.com.au** and on eBay
<http://stores.ebay.com.au/Postcards Online>
Sell Club postcards and for various clients. Anybody interested in Postcards
Online selling your postcards, contact Claire for relevant fees and charges.

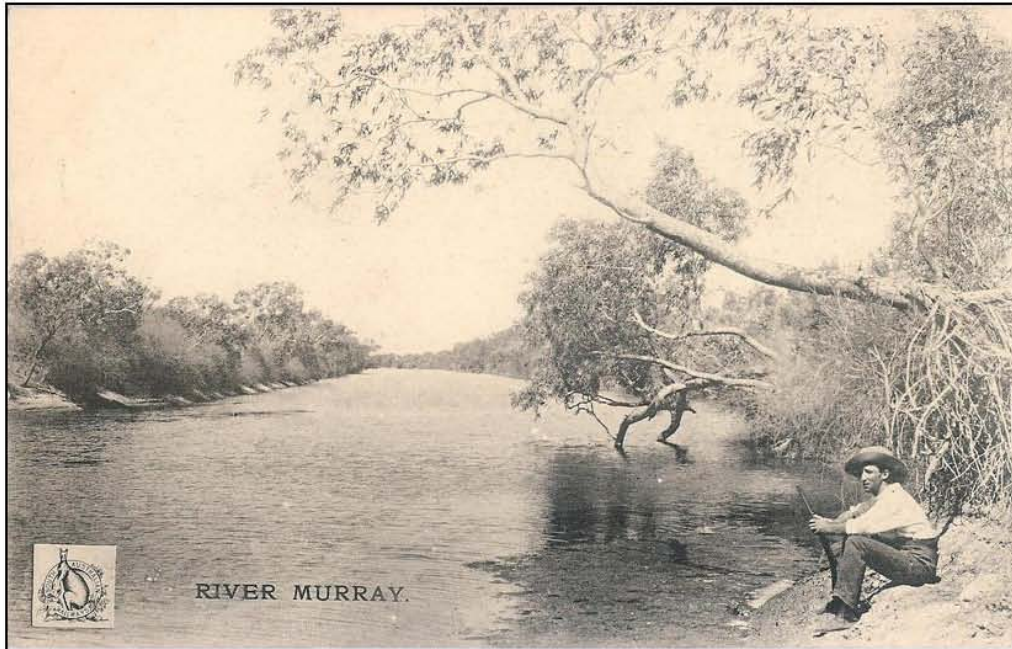
COMING EVENTS 2018:

If anybody knows of events that may interest members please advise the
committee so that it can be included in the Bulletin.

LOCATION OF SA RAILWAYS POSTCARD SCENE

SOLVED OVER 100 YEARS LATER

It has long been mooted that the below postcard from the South Australian Railways series issued during the period 1906-1911 and marked "River Murray" does not in fact show a view of the River Murray as the expanse of water is too narrow, So where was it?



Printed by the Donald Taylor Collotype Company Ltd, North Adelaide

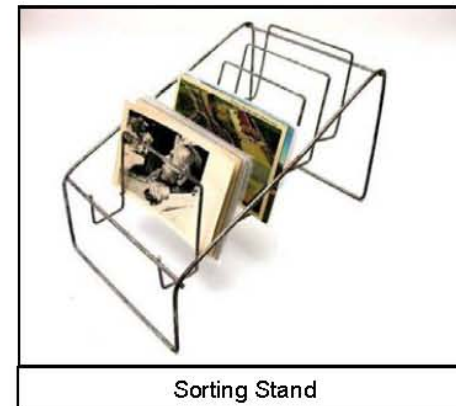
Well, now we know. The below real photographic postcard came in a recent find and shows exactly the same scene and is inscribed "Algebuckina" which is a locality on the Oodnadatta Track. It was along this track that the original narrow gauge railway line north was built.



Make a Christmas Tree



Decoupage and varnish your unwanted postcards



Sorting Stand



Postcard Display Stand
c1900

Ways to display your Postcards



Old library catalogue drawer with beans to the make postcards stand up.



Easter Wreath



Antique Shop Display Stand



Kodak Austral RPPC postally used at Woodduck Bore 26/12/1910



From the Ceiling



Hymn Board

And so why would the SA Railways choose such a location for one of its postcards? Well it was the site of the longest bridge ever built in South Australia. The Algebuckina Bridge highlights the skills required to build the Great Northern Railway from 1878 to 1891 when the line reached Oodnadatta. Costing £60,000, it spans the Neales River and was officially opened for traffic from January 6, 1892. Today 4WD tourists can bush camp there.



Algebuckina Railway Bridge in its hey day between the Wars.

Kodak Austral RPPC

Up to 352 men were employed to build this bridge by a combination of daily workers and piece work. Several graves are nearby. Made up of nineteen 30.9 metre spans the bridge was strengthened in 1926 to carry heavier rail traffic. It is listed on both the National and State Heritage Registers.

POSTCARD MAKING.

Greeting cards, with just the word or phrase you want for the man in the trench, possess an acceptably personal touch, and are easily made. This kind of card can be just as simple or as elaborate as you care to make it, and can be cheaply turned out in endless variety, and retails readily at bazaars and fund sales. While the process is somewhat similar to that of the photographic card, no camera is necessary to make a negative. You require a post card printing frame, fitted with a clear glass. This will cost you one shilling. Next, from any dealer in photographic goods, procure a packet of sensitized postcards of the self-toning variety, at 1s 3d a dozen. This, with a pound of hypo at three-pence, will enable you to turn out a dozen finished cards, each one different or all alike.

Next, for the making of your "negative," there are two different styles which can be turned out by this process, white lettering on a brown ground or brown lettering on a white ground, the former being the simpler. Take some pieces of smooth, white paper, without any water mark, thin drawing paper will do, and cut a number of these the exact size of a postcard. Decide what you want your finished card to contain—a sprig of wattle, a spray of clematis, a big leaf of maiden hair or asparagus fern, a suitable greeting in prose or verse—your name, too, if the card is to be sent by you; this, of course, omitted if the cards are to be for sale. You may either sketch very simply in strong, black lines the flower, etc., and write in the verse on one of your pieces of paper, or you can just tip a pressed sprig of natural flower on with the tiniest speck of gum, and then add the writing. Practice will soon make you expert at getting up "negatives," and you can get together quite a collection in spare moments. These are now ready to be laid face down, on the glass in the printing frame. A card, also put face down on the top, and the back fastened down. The frame must now be put glass side up in the sun, left a few minutes, and taken into the shade, one end of the back being loosened, and the card turned back carefully to see if it is finished. When ready the card should be a very dark brown, the writing quite white. Take the frame inside, remove the card from the frame, and follow the directions enclosed with the packet of cards for finishing. You cannot make a mistake. To get dark writing on a white ground you must first make a P.O.P. negative. To do this get a packet of P.O.P. postcard-size paper, put a sheet of it in, as you did the card, but print it much darker. Finish it off exactly the same as you did your self-toning card, and when dry put it in the printing frame in place of the white paper, but lay it in face up, not face down. By exercising a little skill very beautiful effects can be secured if one has some talent for drawing or copying (or even for tracing). Remember, though, strong lines are necessary to show out well. Indian ink, or, better still, waterproof, should be used for "negative-making."

Of course, any variety of postcard may be used, but I have suggested self-toning postcards as the simplest for the novice. Amateur photographers can get any variety of effects by making their negatives and printing from them in connection with the paper negatives.

The Laura Standard
Thursday 4 October 1906

Magnificent Views Price 1d. each.



LET ME SEE?

We beg to announce that illustrated postcards (local views) can be obtained at the "Standard" office, price 1d each. The views include a splendid picture of Beel-loo Reservoir, Laura Bridge at entrance to town, and collection of small views of Laura from different positions. Residents of Laura could not have a prettier souvenir at the price to send to their friends to show the beauty of their town and district.

The collection of small views include; the following:— Laura Flour Mill; Bridge over Rocky River—top view; Bridge over Rocky River—bottom view, Union Bank and two views of Herbert-street from different positions, and one looking west from Post Office—a cluster of views both novel and pretty.

We have since received a further supply of Pictorial Postcards (local views). They comprise a very pretty view of the Laura Bridge—the most attractive yet published; Laura Post-office; and an excellent view from Herbert-street, showing the Laura Town Hall.